

CONVEGNO NAZIONALE

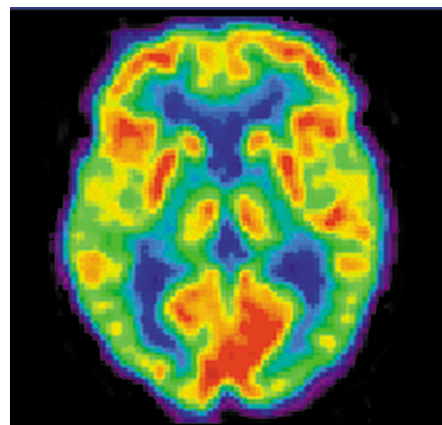
Let's stop HIV

Nuove prospettive
e popolazioni speciali



La mappa della nuova tossicodipendenza

Felice A. Nava



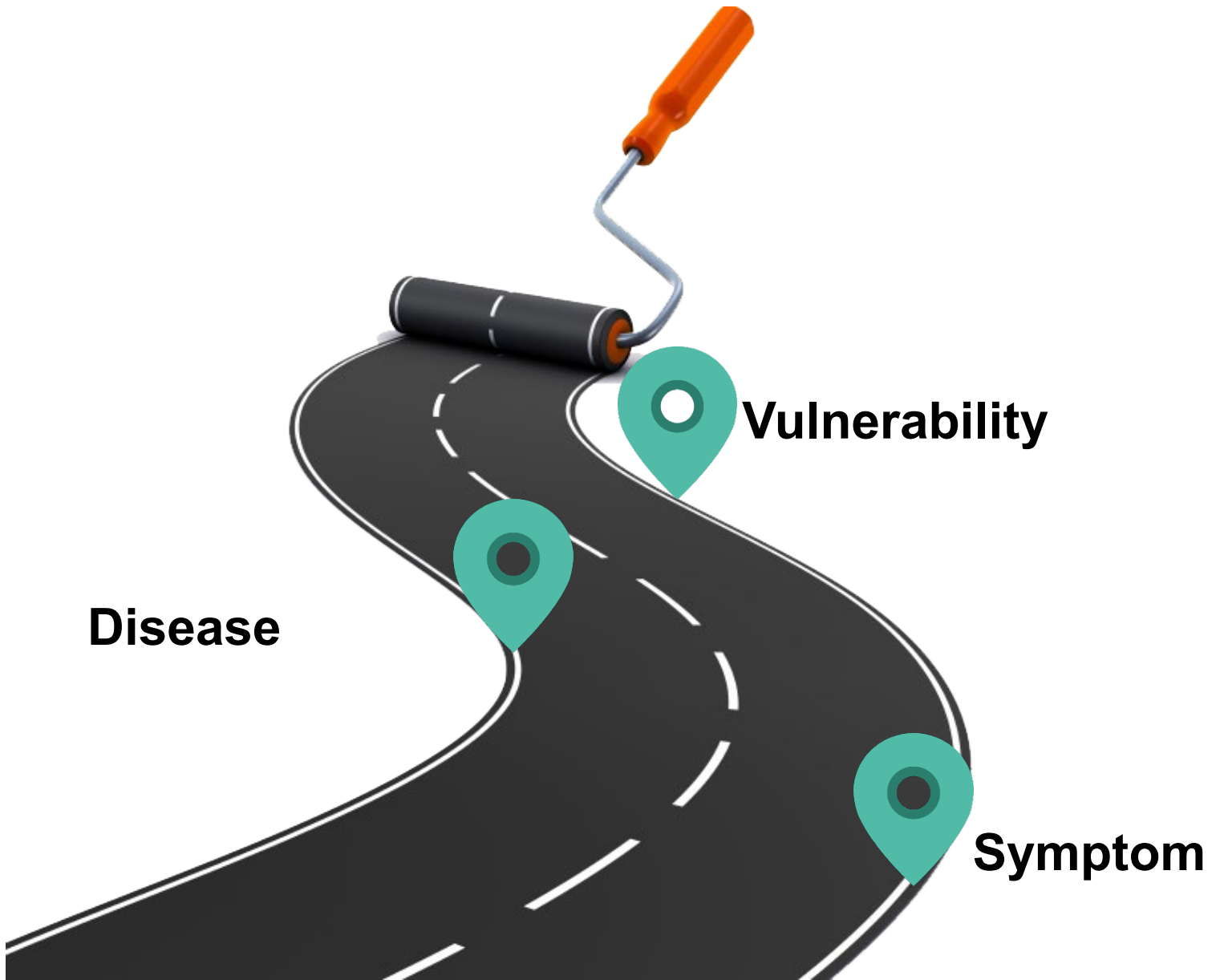
Felice Nava, MD, PhD
Director Penitentiary Medicine and Drug Abuse
Unit, Public Health Service, Padova
Director Italian Society of Addiction Medicine
(FeDerSerD)

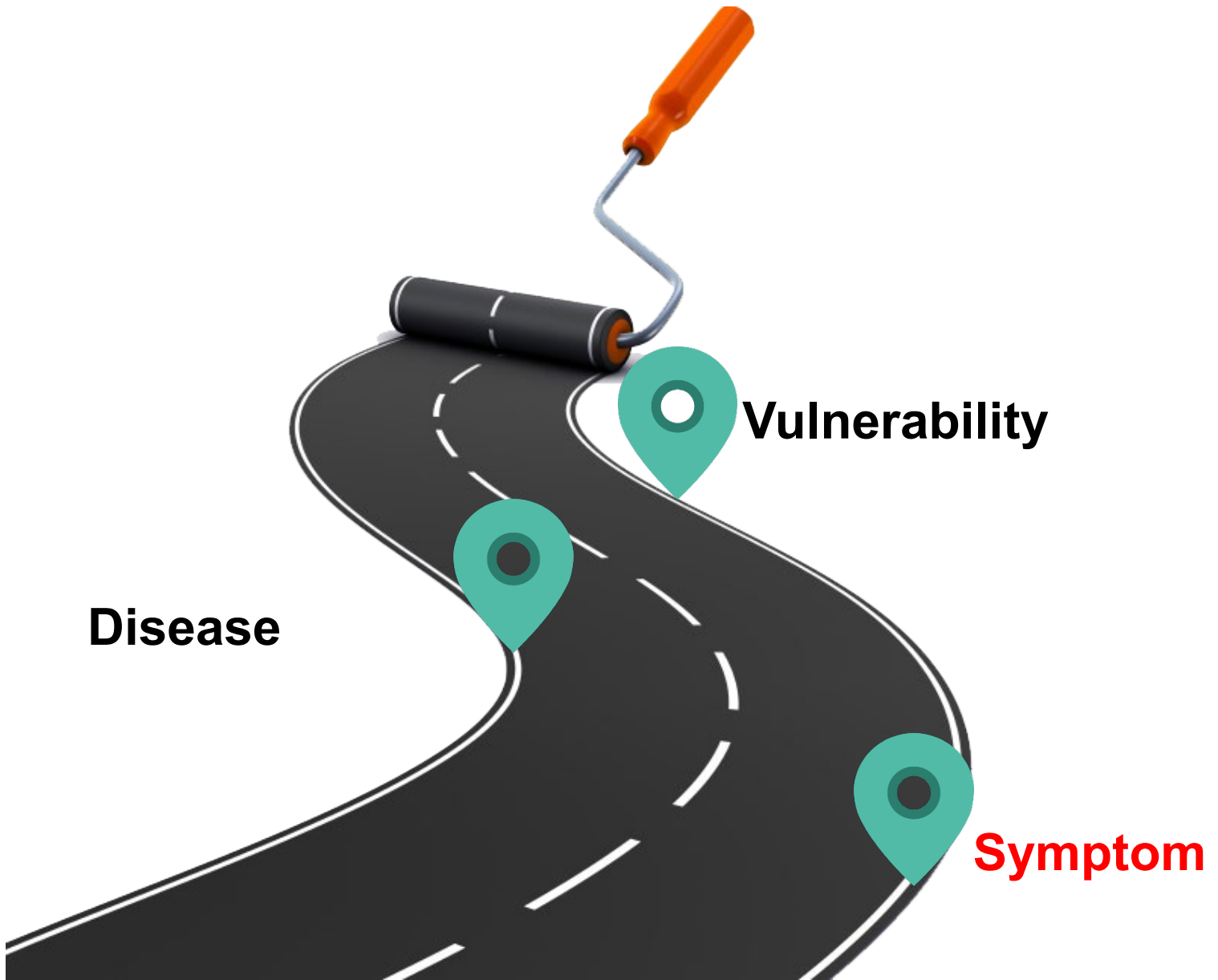
The Map of the New Addiction

Rimini, 3 April 2019

As you become addict...







Disease

Vulnerability

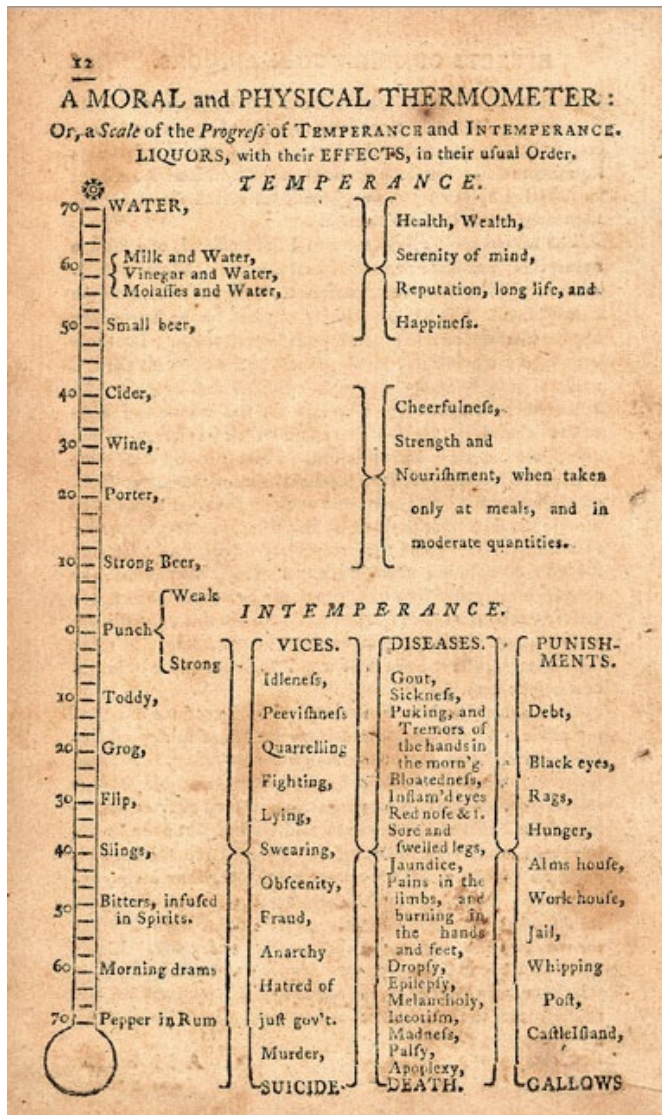
Symptom

Addiction as Symptom

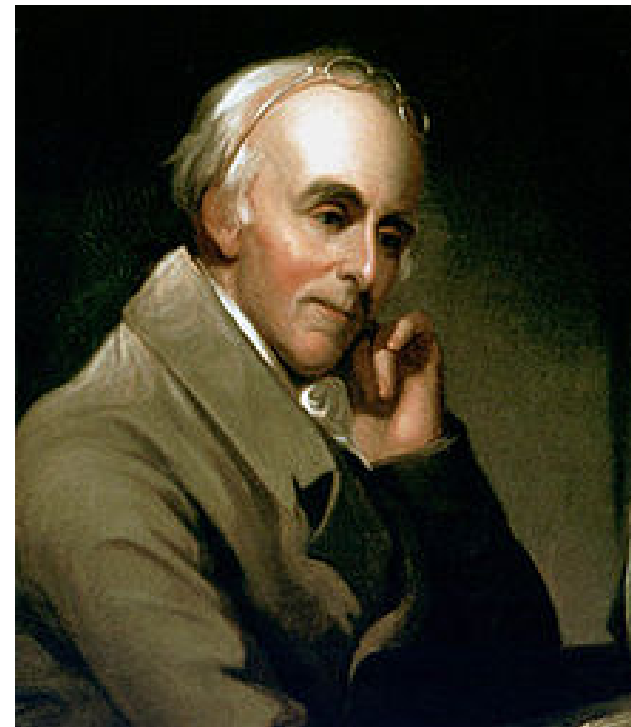
- Loss of control;
- Craving;
- Use despite negative consequences



The Beginning of the History...

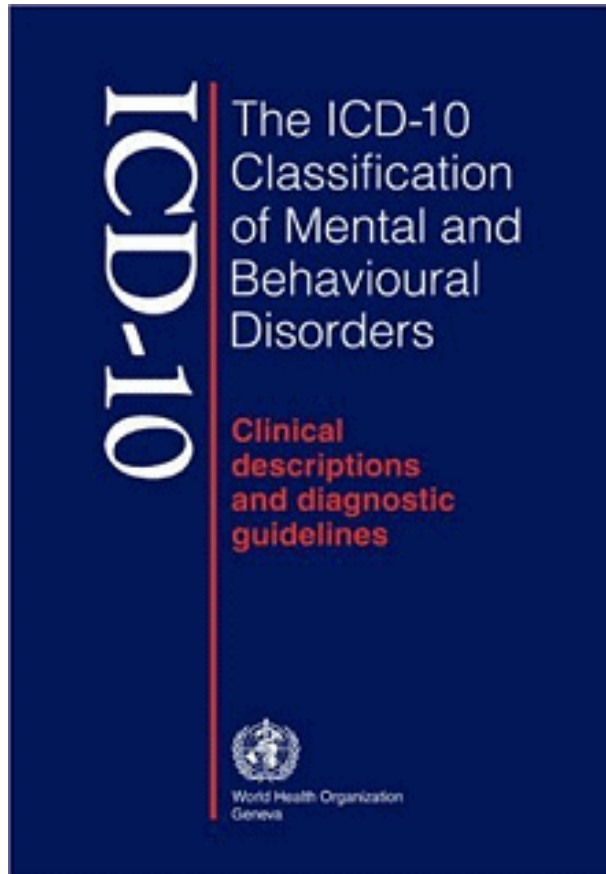


Benjamin Rush the father of the model of the alcoholism as disease



(1746-1813)

ICD: the Appearance of the Drug Related Disorders



WHO: Criteria (1964)	Physical Dependence Psychological Dependence
ICD 8 (1967)	Personality Disorders Nevrosis
ICD 9 (1975)	Abuse/Dipendence
ICD 10 (2007)	Tolerance, Abstinence, Craving

DSM: The Categorical System



DSM I (1952)	3 Diagnostic Categories: <ul style="list-style-type: none">- Organic syndrome- Functional disorders- Mental retard
DSM II (1968)	11 Diagnostic Categories
DSM III (1984) DSM III R (1987) DSM IV (1994) DSM IV TR (2000)	Atheoretic, Descriptive, Categorical

DSM III-R (1987): the Era of the Symptom

Substance-Related Disorders

- Compulsion
- Loss of control
- Drug seeking behaviour





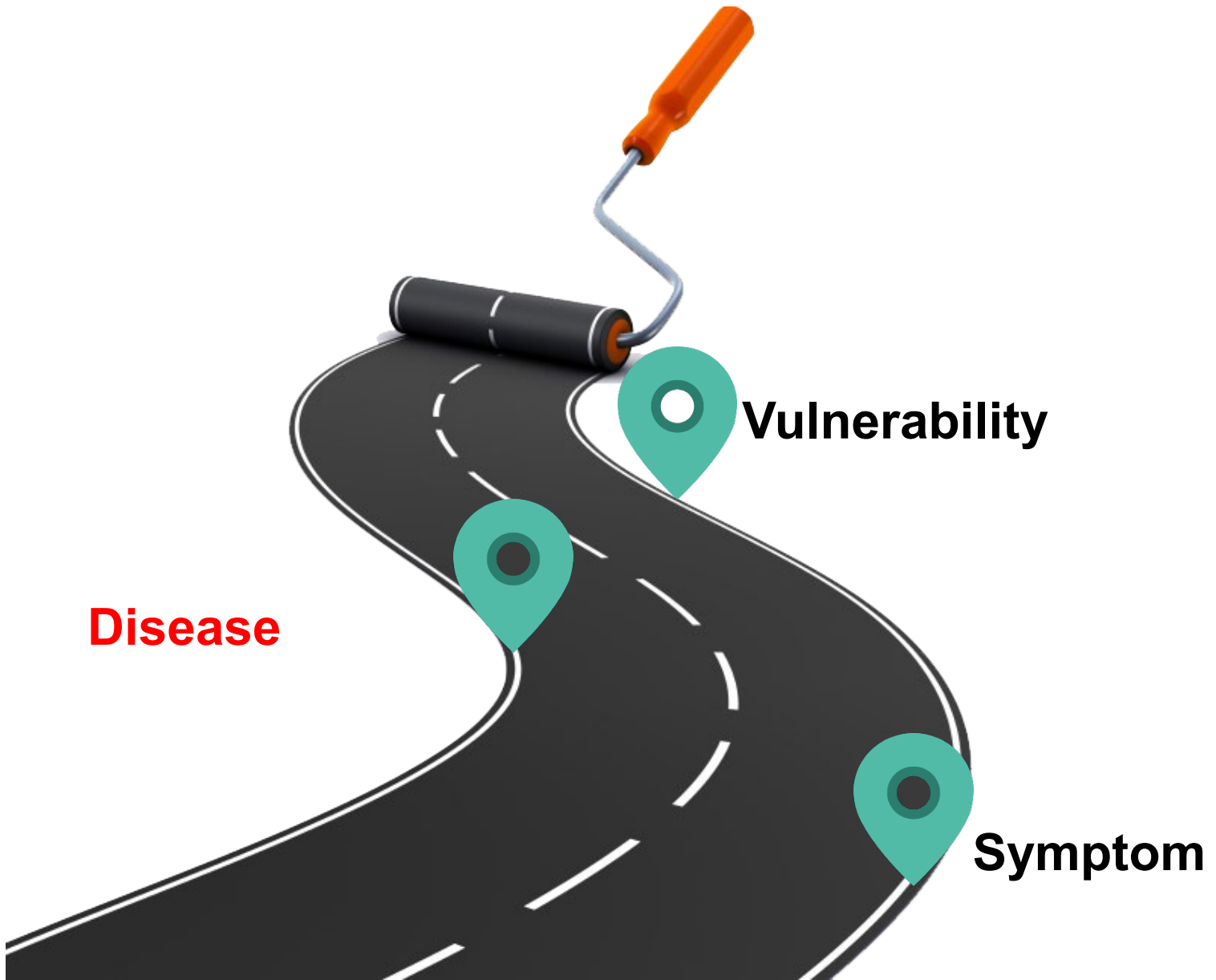
DSM IV (1994): The Beginning of the Pathogenetic Era

Abuse

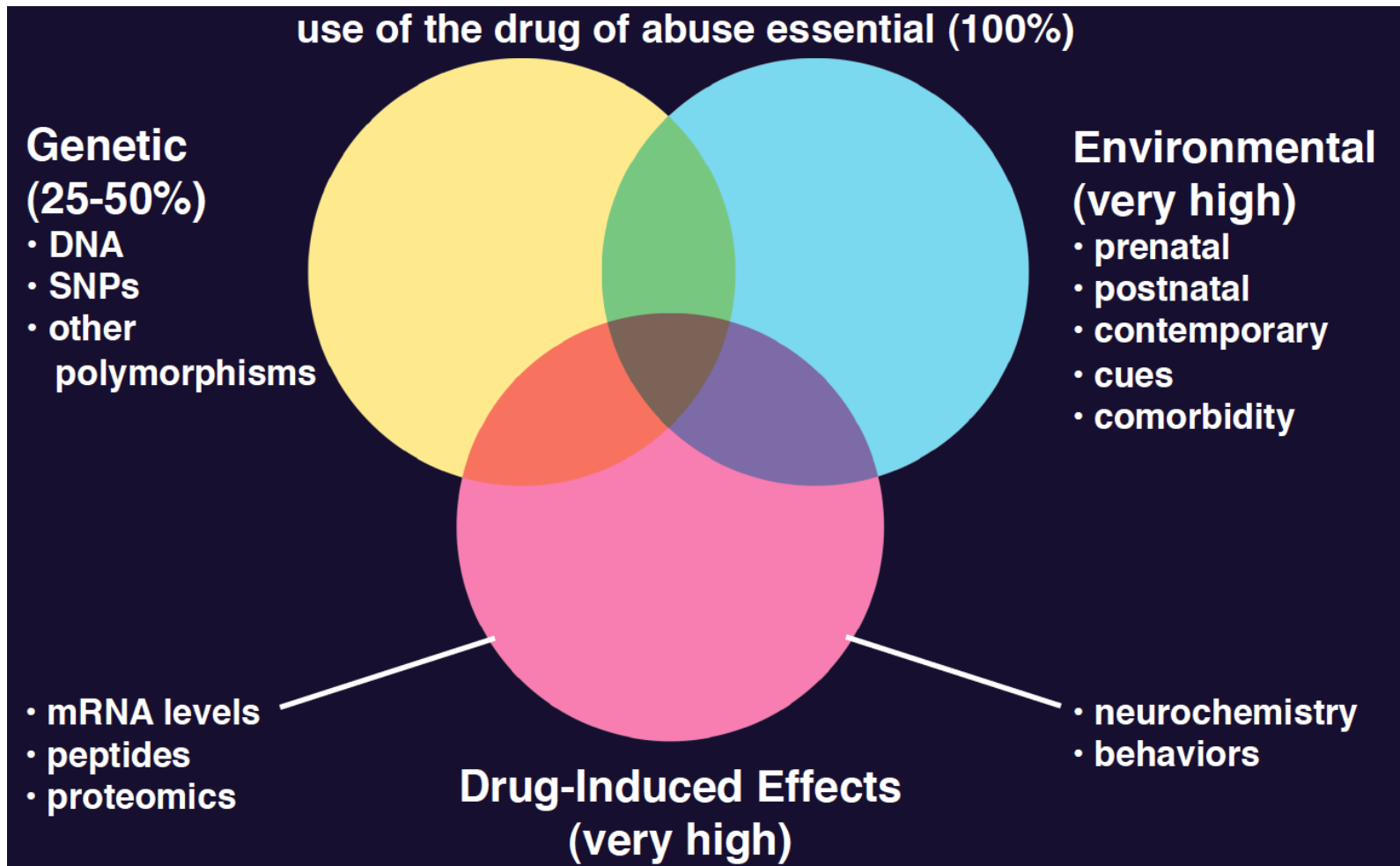


Dependence

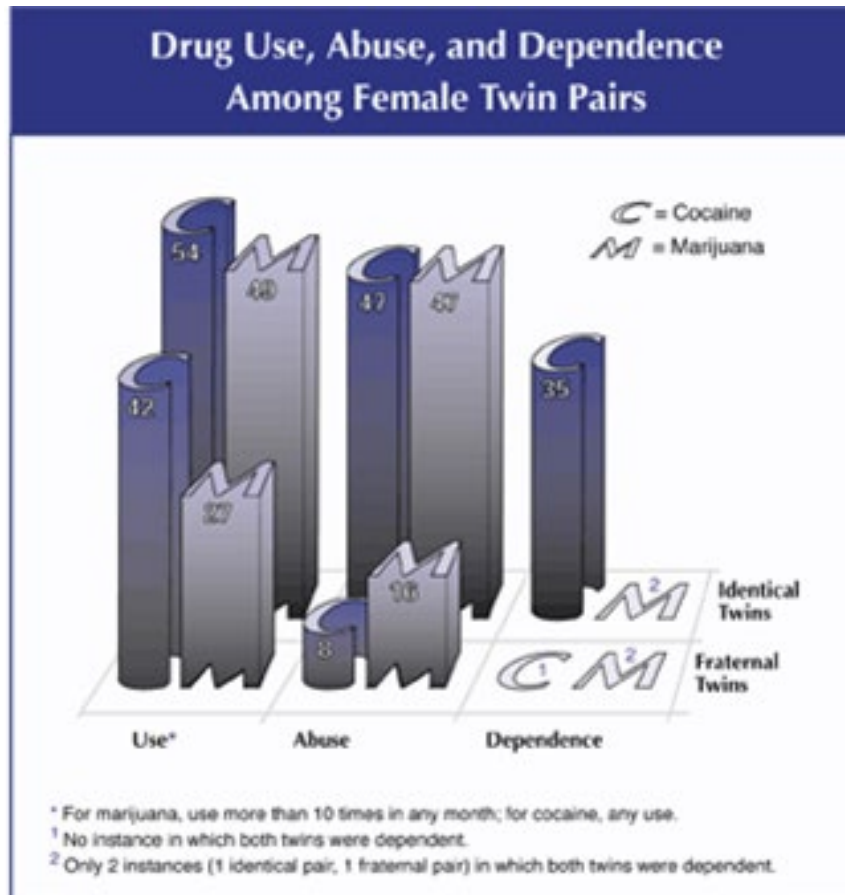




Vulnerability & Disease



Genes & Addiction (1)



Genes & Addiction (2)





Virginia Kelley, was married five times, twice to the same man



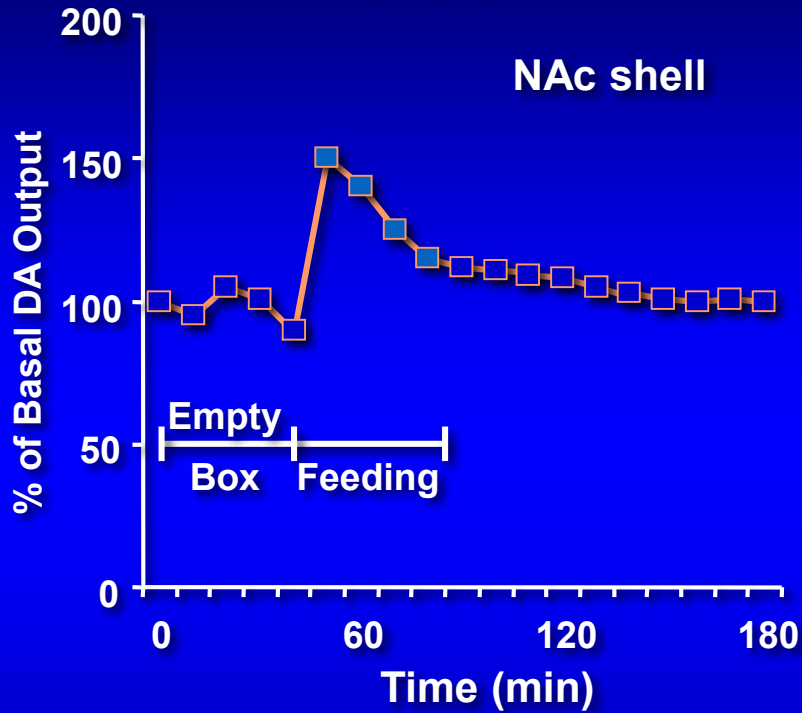
Bill Clinton



Roger Clinton

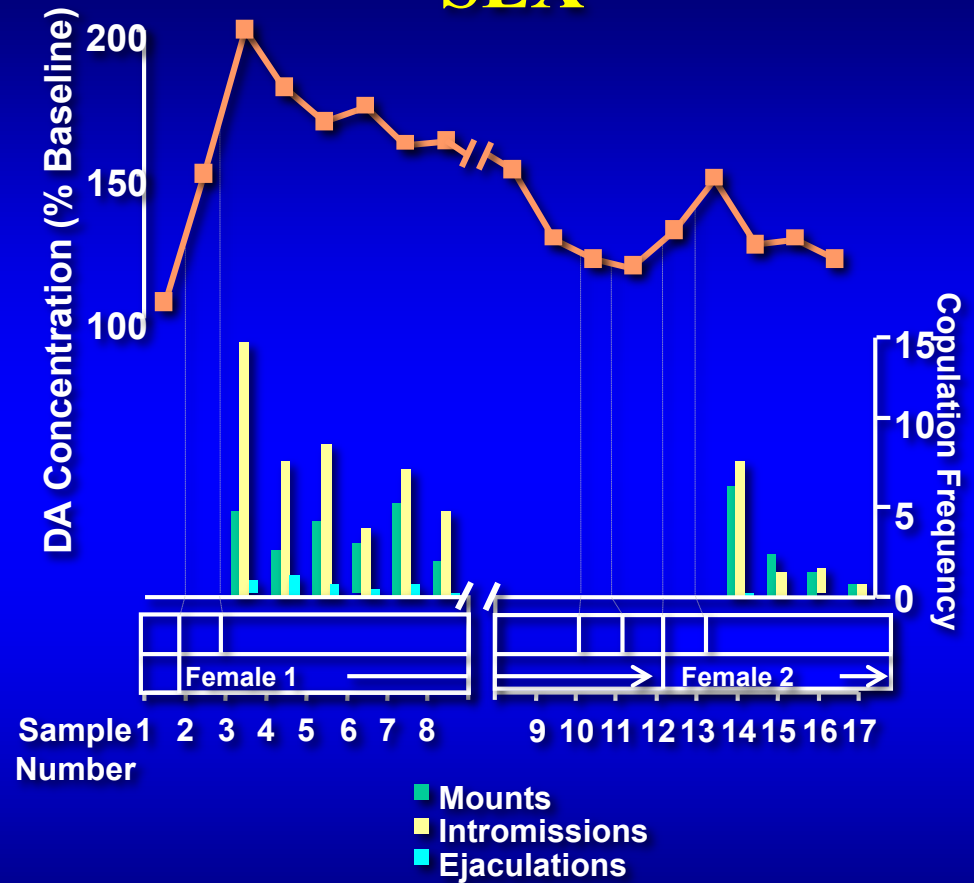
Natural Stimuli and Incentive Reward

FOOD



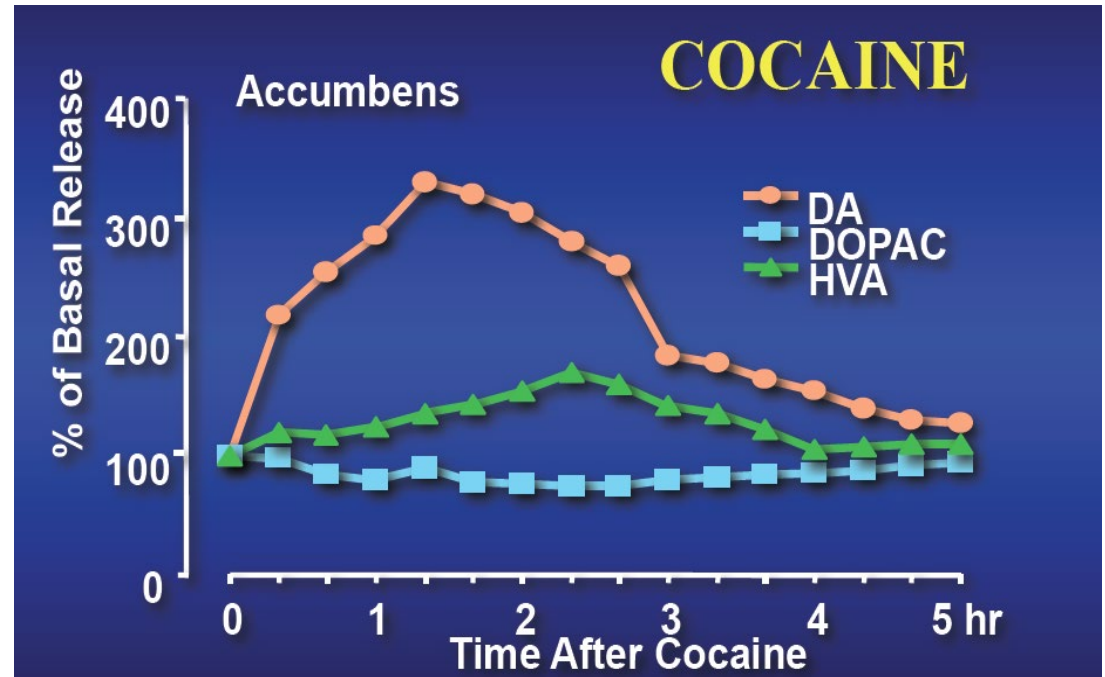
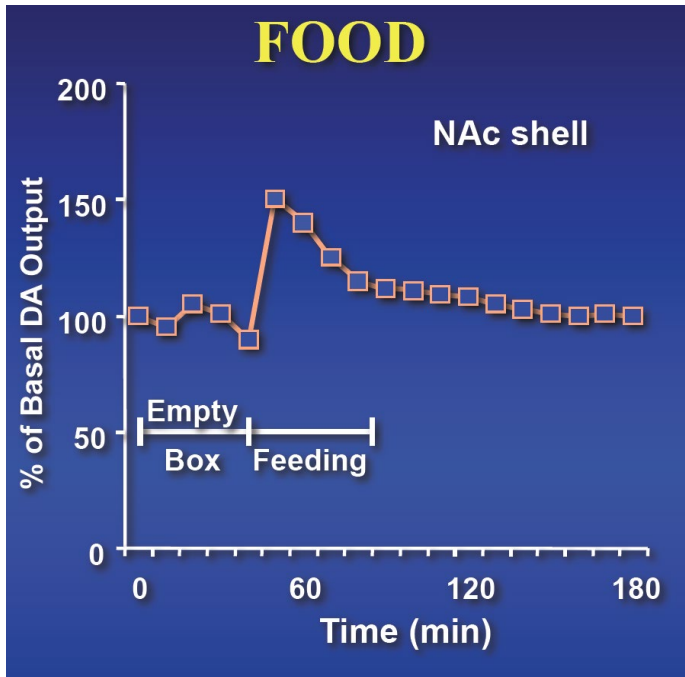
Source: Di Chiara et al.

SEX

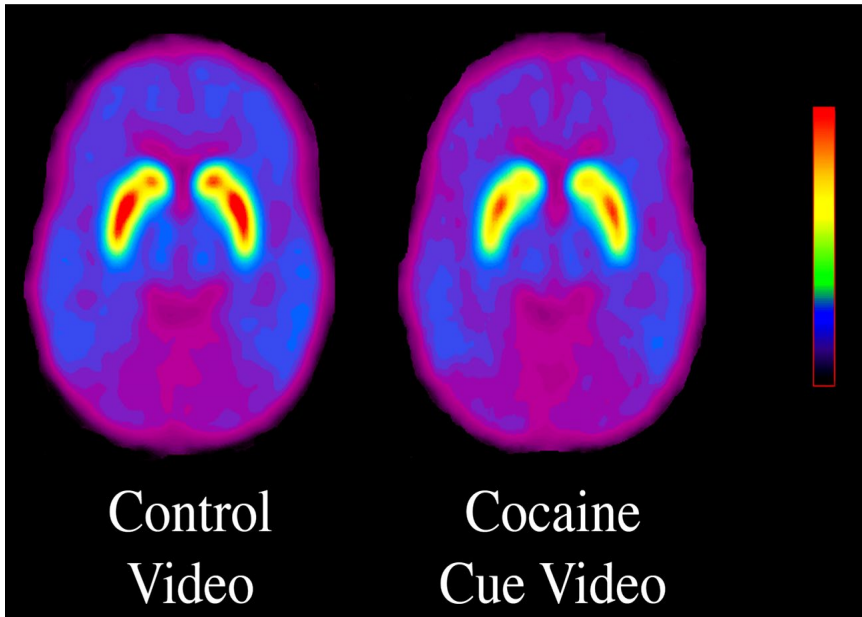


Source: Fiorino and Phillips

Drug Abuse as Surrogate of Natural Stimuli



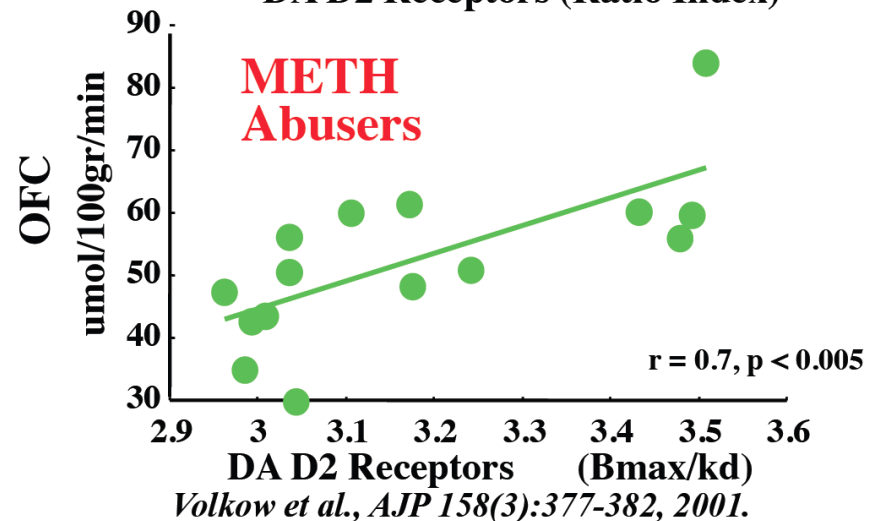
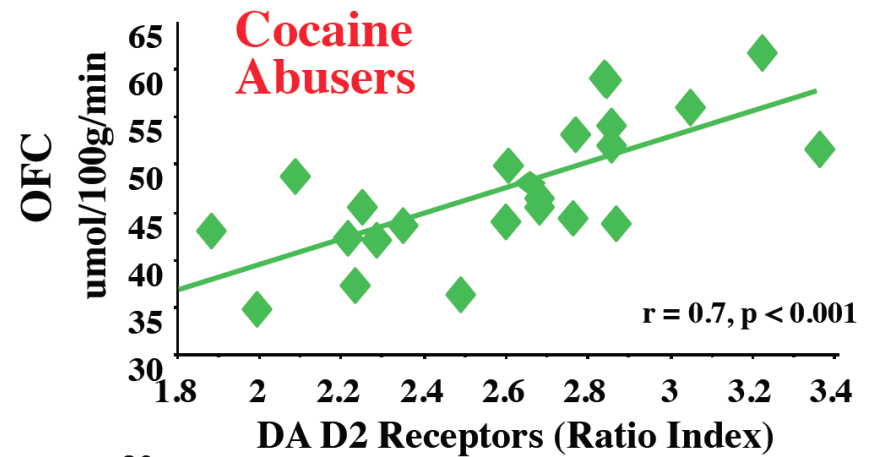
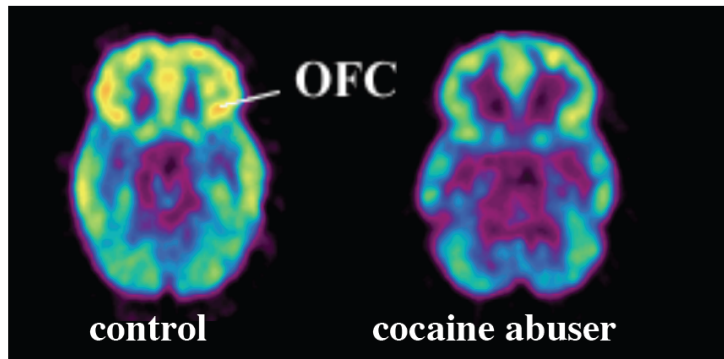
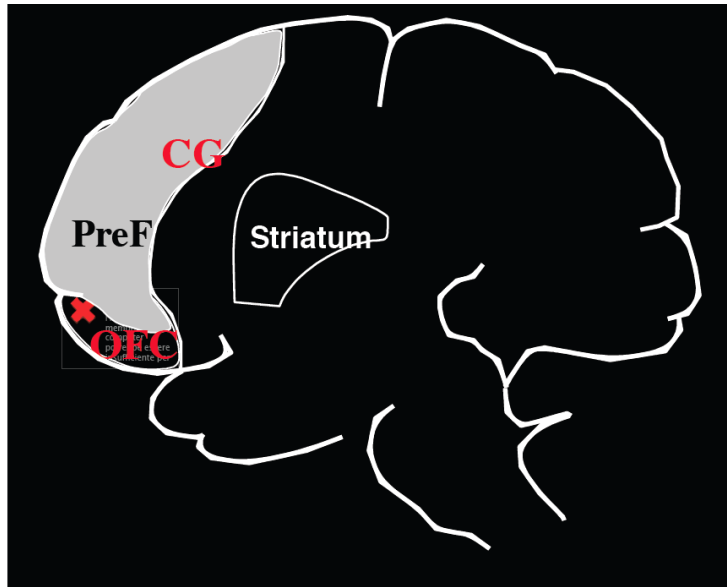
The Memory of the Drug...



The relapse is due to:

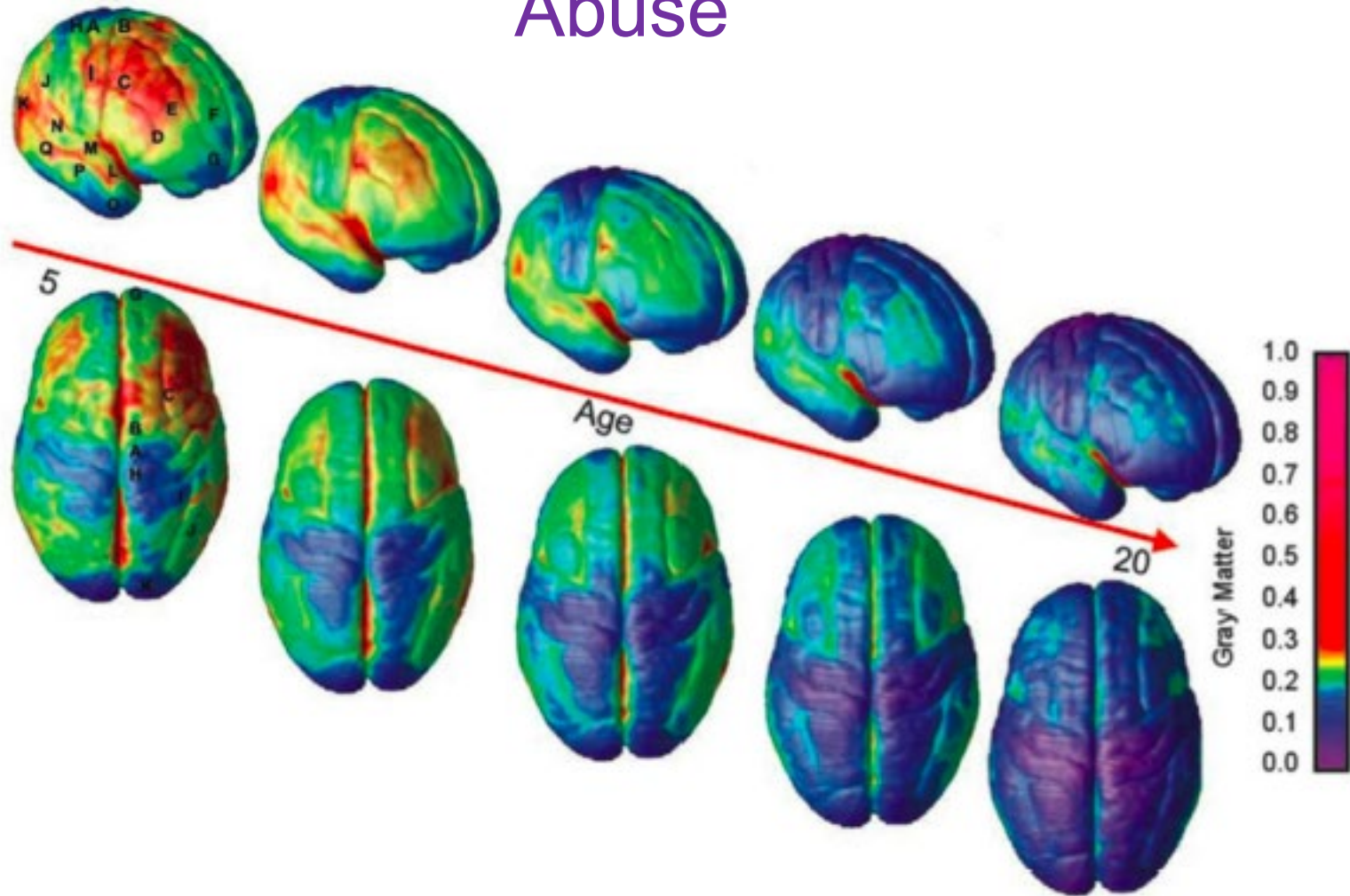
1. drug
2. cue
3. stress

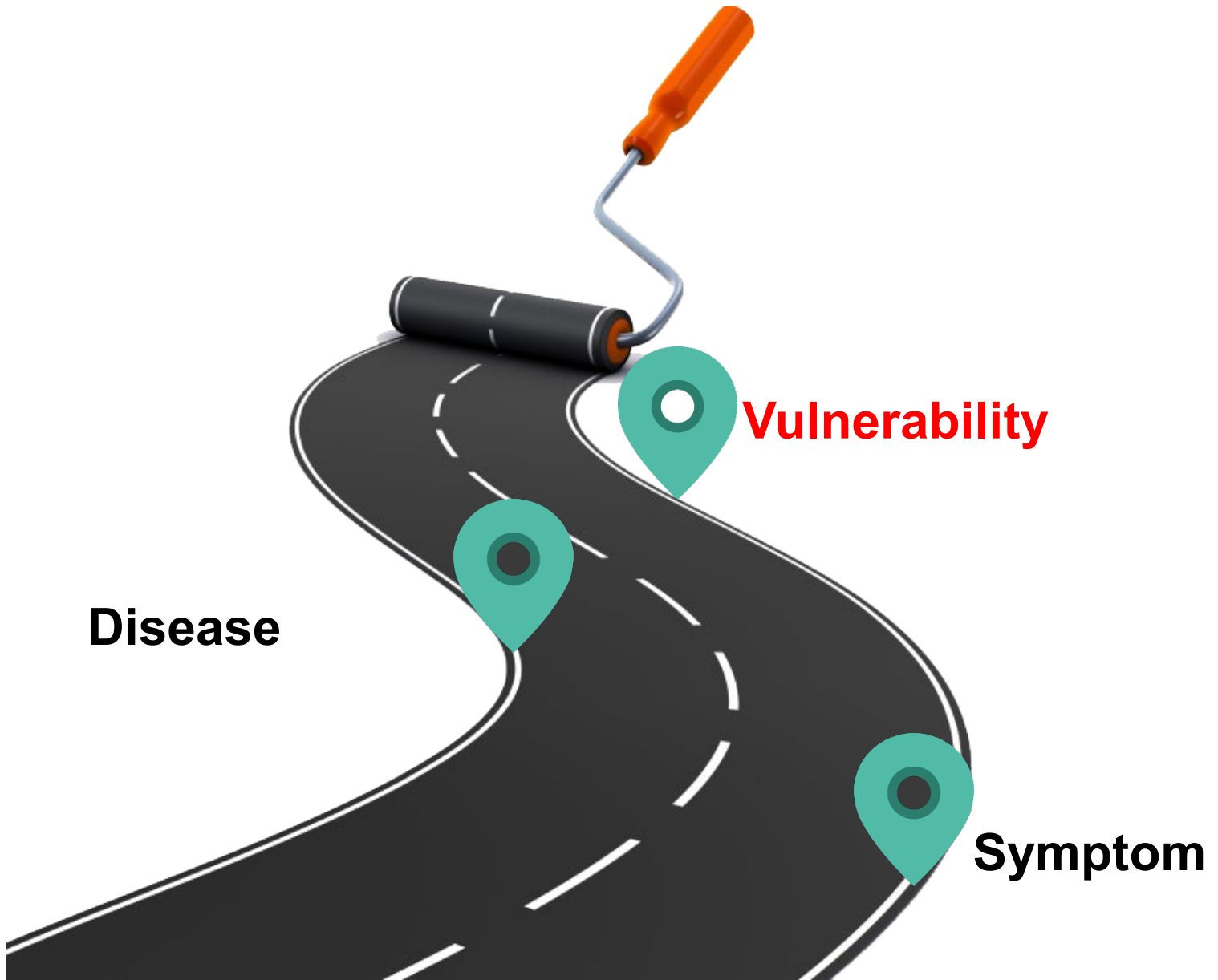
The Chronic Drug Use and the Hypofrontality



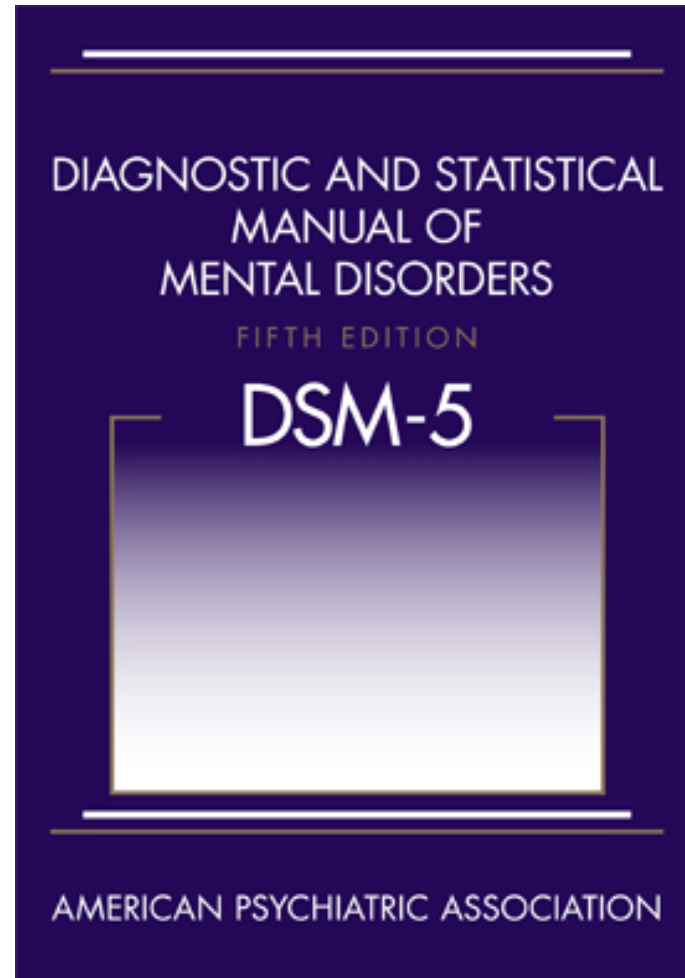
Volkow et al., *AJP* 158(3):377-382, 2001.

Brain Adolescent as Primary Target of Drug Abuse





DSM-5®: The Prospective



DSM-5®: Severity Criteria

Substance Use Disorder



Mild: 2-3/11

Moderate: 4-5/11

Severe: 6/11



DSM-5®: Etiopathogenetic Perspective

- New Terminology: “**Substance Related and Addictive Disorders**”
- Behavioural Addictions: “**Gambling Disorder**”
- **No more the term “Abuse”**
- Same DSM-III-R criteria (no legal problem)
- Added “**craving**”
- Tolerance and withdrawal ignored if the patient is treated for the pain, anxiety, depression, ect. (dependence = “**compulsive drug-seeking**”)
- **Severity** (based on the number of the symptoms)

Neurobiology of Attachment

The neurobiological of the relationship



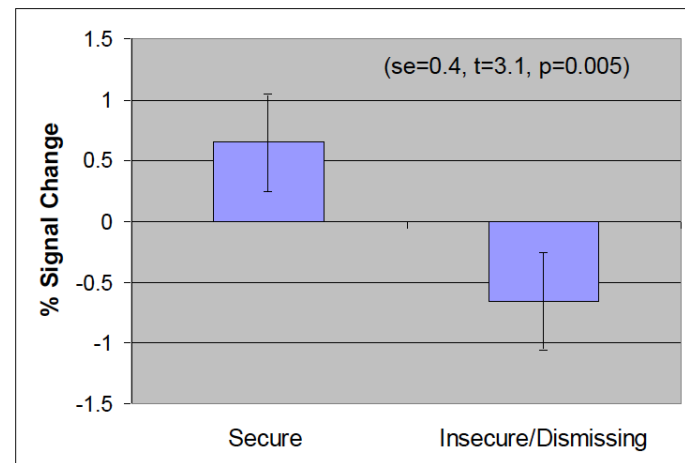
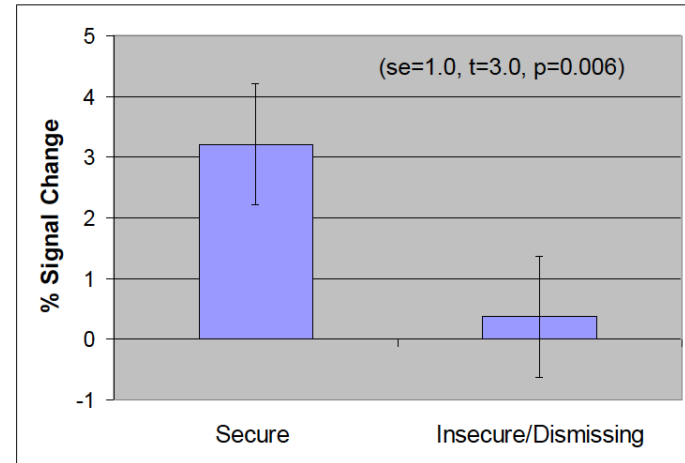
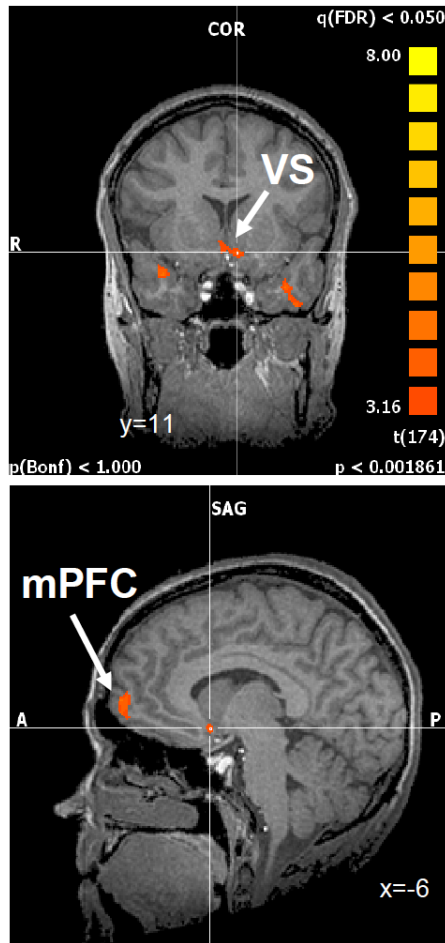
(Schore, 2001; 2002; Siegel, 2001)

Attachment & Addiction

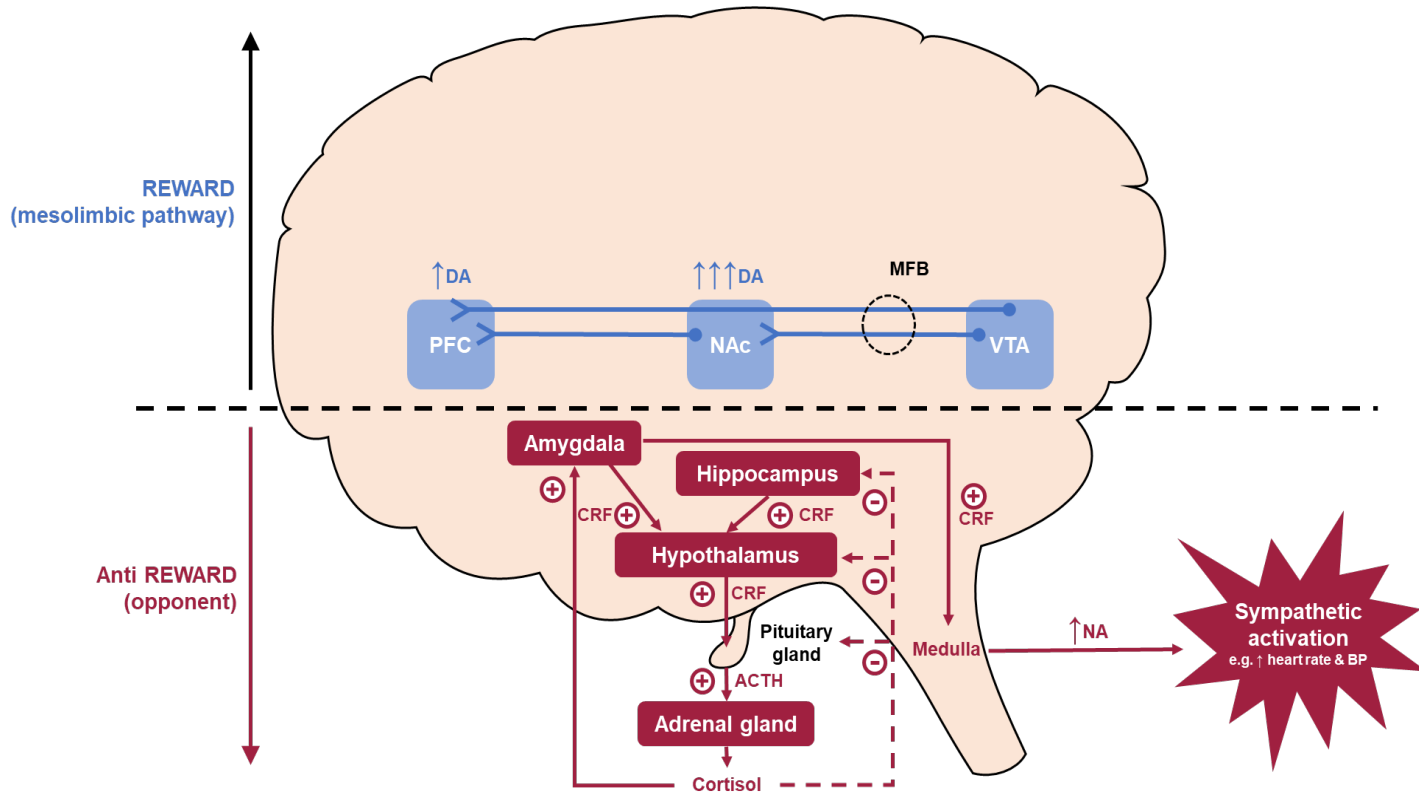
Bilateral
Ventral
Striatum



R Medial
PFC



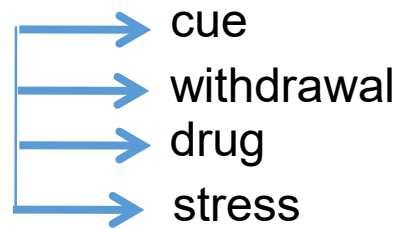
Stress & Addiction



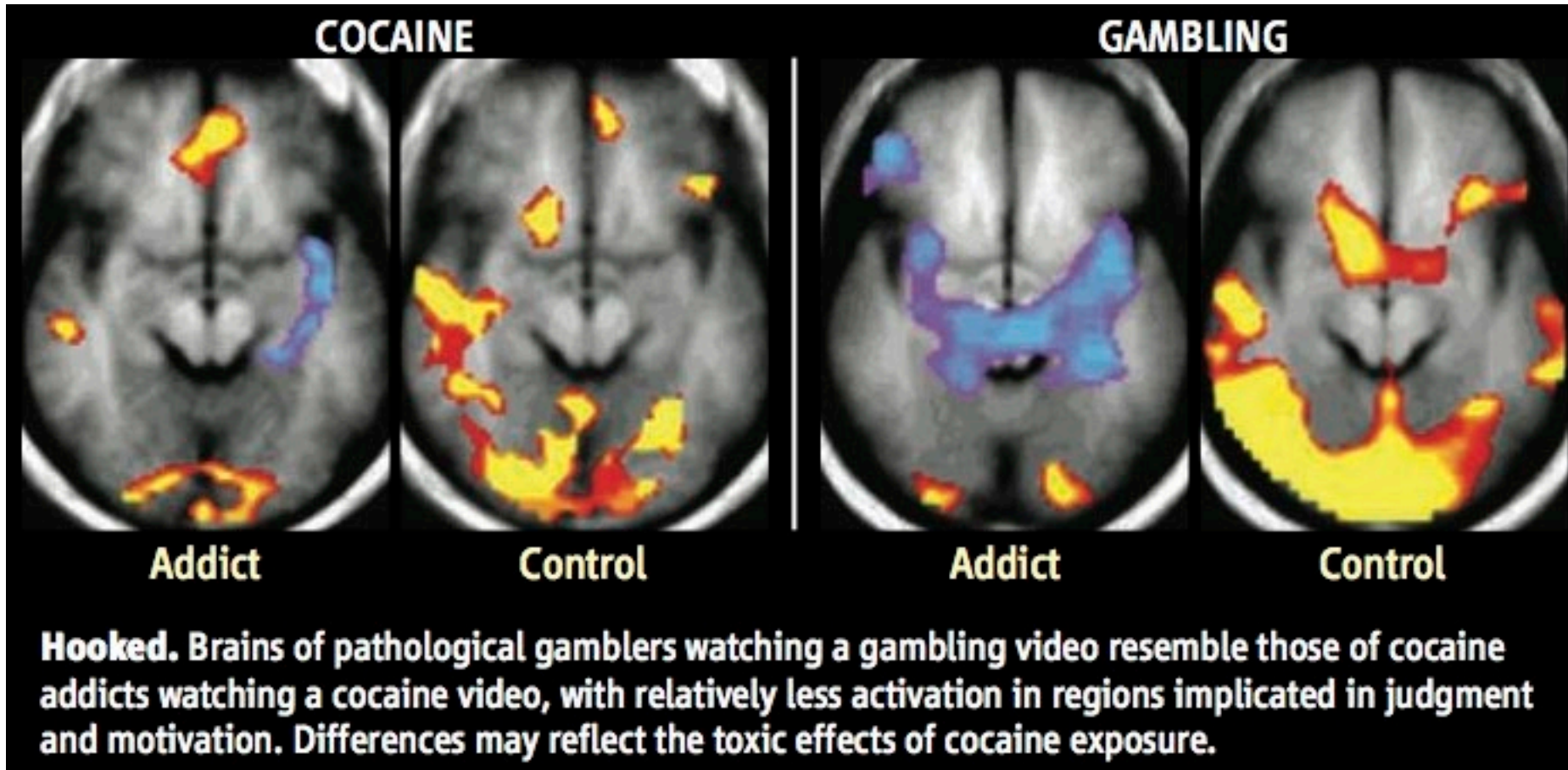
Craving: the Bridge between *Drug Related and Behavioral Addictions*

- Dysphoric craving: after use stop (long lasting)

- Episodic craving:



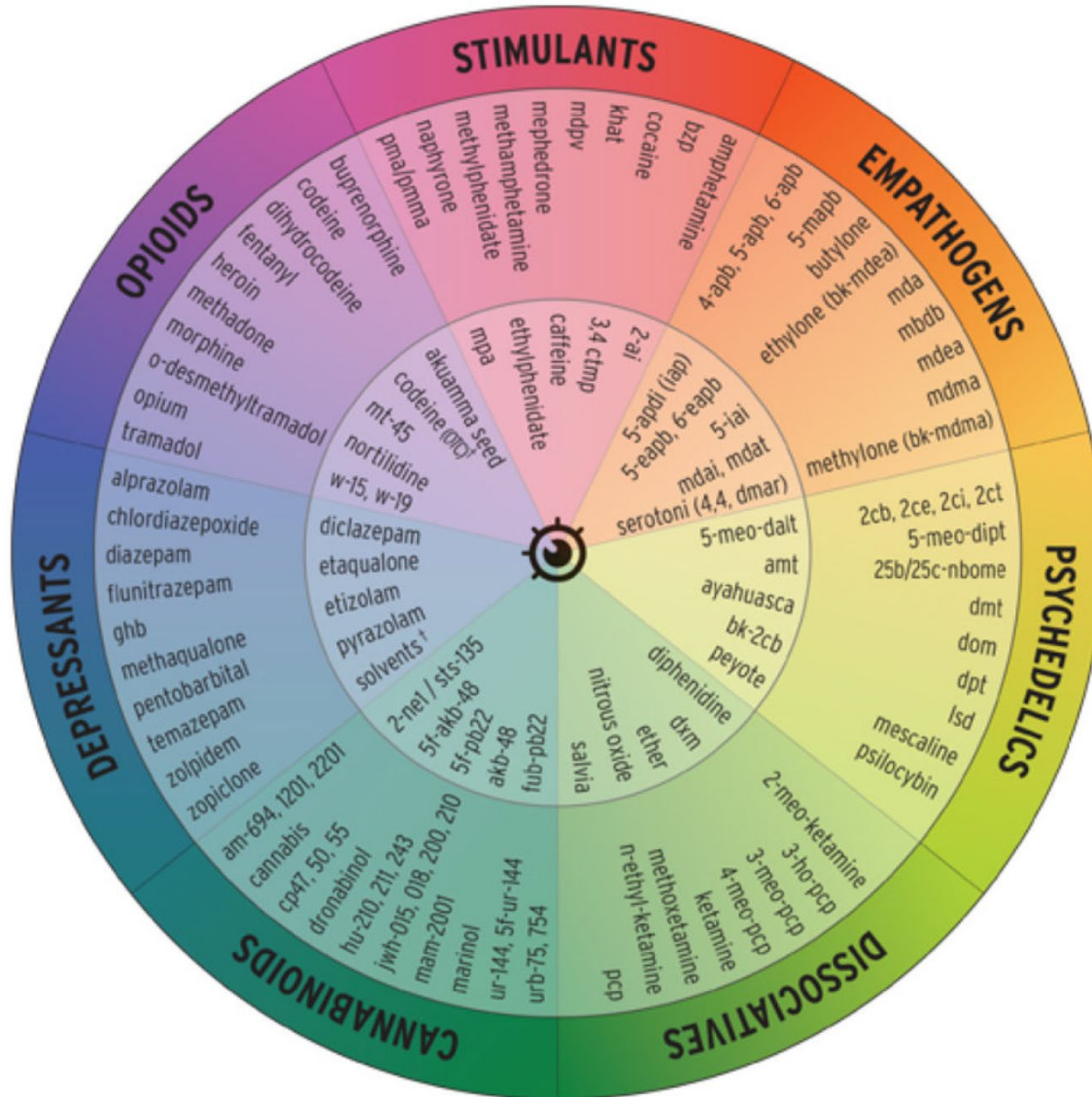
Neurobiological Common Route



- *“...it is likely that the future drugs of abuse will be synthetics rather than plant products. They will be synthesized from readily available chemicals, will be very potent, and often very selective in their action. In addition, they will be marketed very cleverly.”*

Gary Henderson, Journal of Forensic Science 1988

Class of NPS



Take Home Messages

Addiction: is a chronic multifactorial relapsing disease

Pathological behaviour:

- Loss of craving;
- Craving;
- Use despite negative consequences

Neurobiology: Learning and memory disease with significant changes in the reward system



REGIONE DEL VENETO



ULSS6
EUGANEA

Felice A. Nava, MD, PhD

**Director Penitentiary Medicine and
Drug Abuse Unit, Public Health
Service Padua, Italy**

Phone 049-8214904

Fax 049-8214908

felicealfonso.nava@aulss6.veneto.it



**Director Scientific Committee of the
Italian Society of Addiction Medicine
(FeDerSerD)**

www.federserd.it

<http://www.felice-nava.it>

felice.nava@icloud.com